

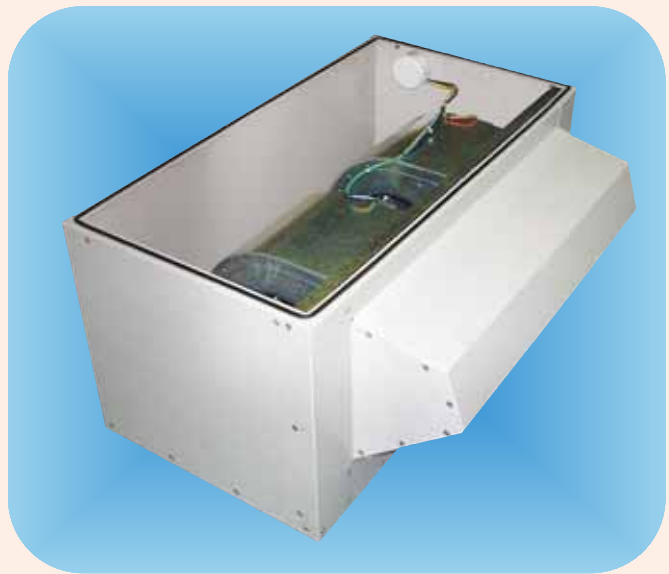
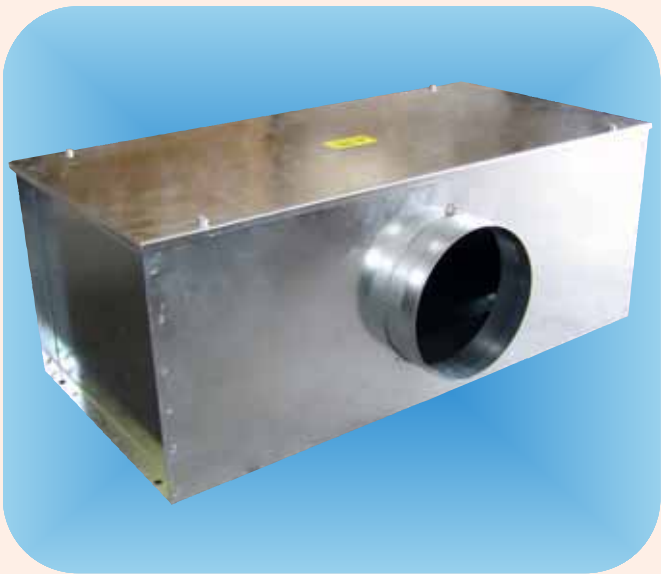
CENTRIFUGAL TWIN FANS

FOR INDUSTRIAL / COMMERCIAL USE

- “DMTSQ” - Duct Mounted, Slimline, Quiet
- “RMTS” - Roof Mounted, Slimline
- “DMT” - Duct Mounted
- “RMT” - Roof Mounted
- Belt Driven "DMT" and "RMT"



Uniclass L7534





“RMTS” ROOF MOUNTED TWIN FANS

“RMTS” Range

- 7 models from 125 to 500mm
- Airflow from 335 to 4063 m³/hr (0.09 to 1.13m³/sec)
- Plastic coated sheet steel cabinet
- Fully weatherproofed
- Birdmesh on outlet
- Air inlet through rear or bottom panel
- Thermal overload protection
- Max air temperature 40°C
- Auto changeover controllers with variable duty share
- All fans single phase



“RMTS” ROOF MOUNTED TWIN FANS - TECHNICAL DATA

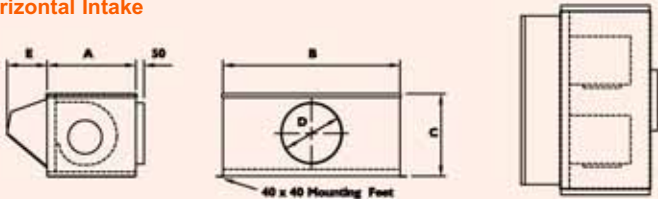
Model	Size		Power Kw	Current amps	SC amps	Speed rpm	Autochangeover Controller		Sound Level db A at 3m	Sound Power Levels db							
	ins	cm					Manual Duty Share	Auto Duty Share		Mid Octave Bands (Hz)							
										63	125	250	500	1000	2000	4000	8000
RMTS125	5	12	0.135	0.63	1.6	2000	VAC1E	VAC2E	41	67	66	61	53	49	45	42	38
RMTS150	6	15	0.135	0.63	1.6	2000	VAC1E	VAC2E	41	67	66	61	53	49	45	42	38
RMTS200	8	20	0.19	0.85	2.2	1250	VAC1E	VAC2E	46	77	78	73	70	67	63	60	55
RMTS250	10	25	0.37	3.6	11.2	1450	VAC1E	VAC2E	51	88	86	73	68	68	60	62	55
RMTS315	12	31	0.37	3.85	12.0	1400	VAC1E	VAC2E	57	90	83	77	77	70	65	64	56
RMTS400	16	40	0.55	6.0	18.0	1400	VAC1E	VAC2E	61	92	87	80	74	72	73	69	62
RMTS500	20	50	0.55	6.8	21.0	1055	VAC1E	VAC2E	64	92	76	80	73	72	74	69	63

“RMTS” ROOF MOUNTED TWIN FANS - PERFORMANCE

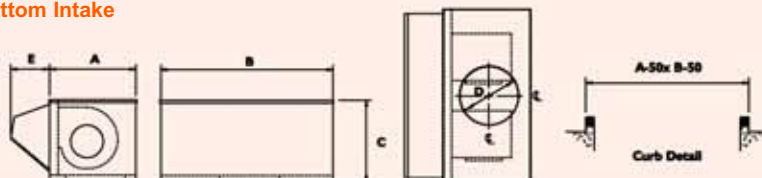
Model	Max m ³ /hr	Max cfm	m ³ /sec at Pa										
			0	25	50	75	100	150	200	250	300	350	400
RMTS125	335	196	0.093	0.091	0.089	0.087	0.085	0.079	0.072	0.058	0.025	-	-
RMTS150	353	208	0.098	0.095	0.093	0.091	0.088	0.083	0.076	0.062	0.032	-	-
RMTS200	648	382	0.18	0.178	0.175	0.172	0.168	0.161	0.145	0.118	0.076	-	-
RMTS250	1872	1104	-	-	0.47	0.45	0.43	0.38	0.25	-	-	-	-
RMTS315	2952	1742	-	-	0.78	0.76	0.73	0.69	0.65	0.59	0.48	-	-
RMTS400	3672	2166	-	-	0.99	0.98	0.96	0.93	0.89	0.83	0.69	-	-
RMTS500	4068	2400	-	-	-	-	1.09	1.07	1.05	1.03	0.99	0.86	-

“RMTS” ROOF MOUNTED TWIN FANS - DIMENSIONS

Horizontal Intake



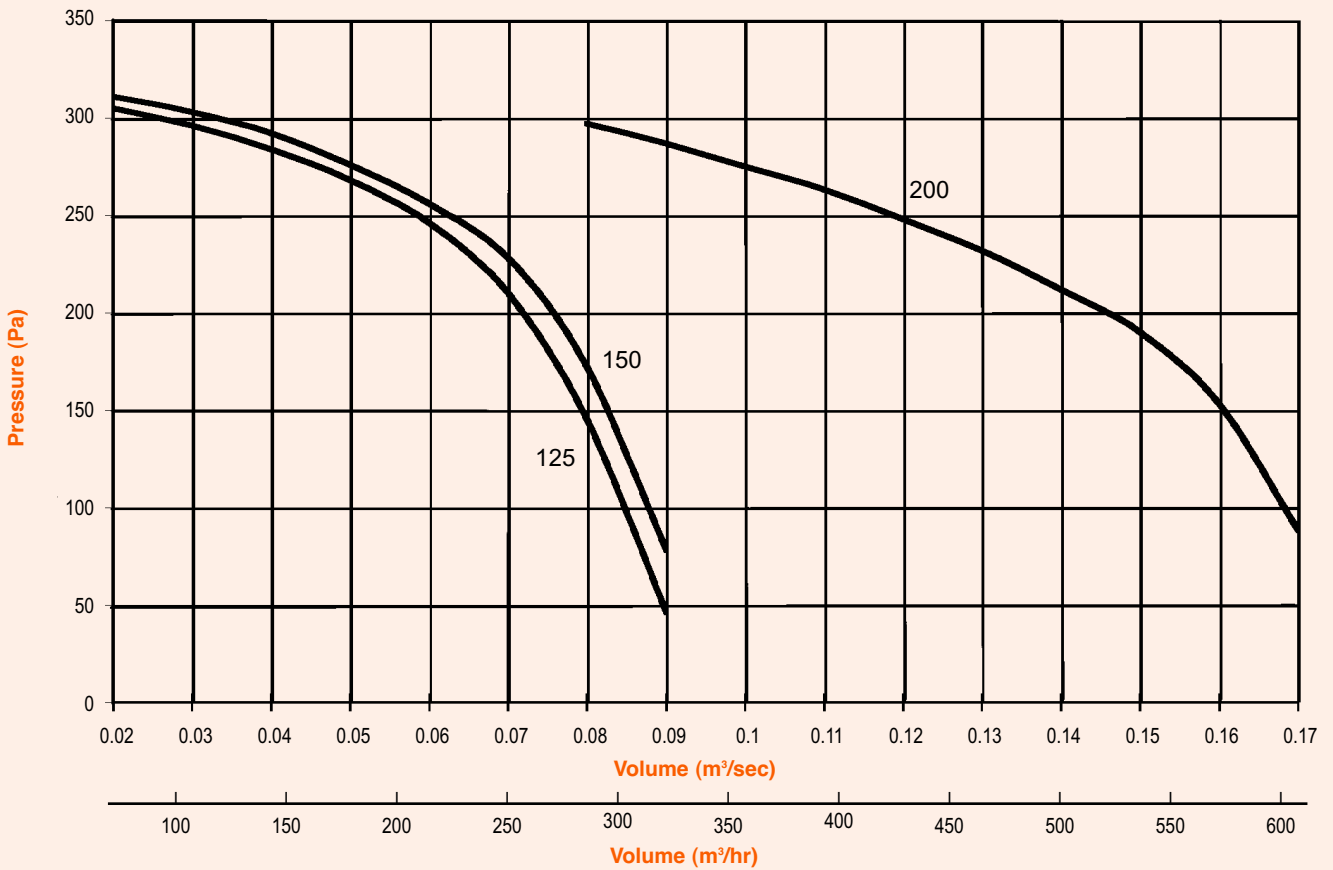
Bottom Intake



Model	A	B	C	ØD	E	Kg
RMTS125	400	650	375	125	175	19
RMTS150	400	650	375	150	175	19
RMTS200	450	800	375	200	175	21
RMTS250	500	950	450	250	200	45
RMTS315	650	1000	580	315	250	51
RMTS400	650	1150	580	400	250	56
RMTS500	700	1250	580	500	300	84

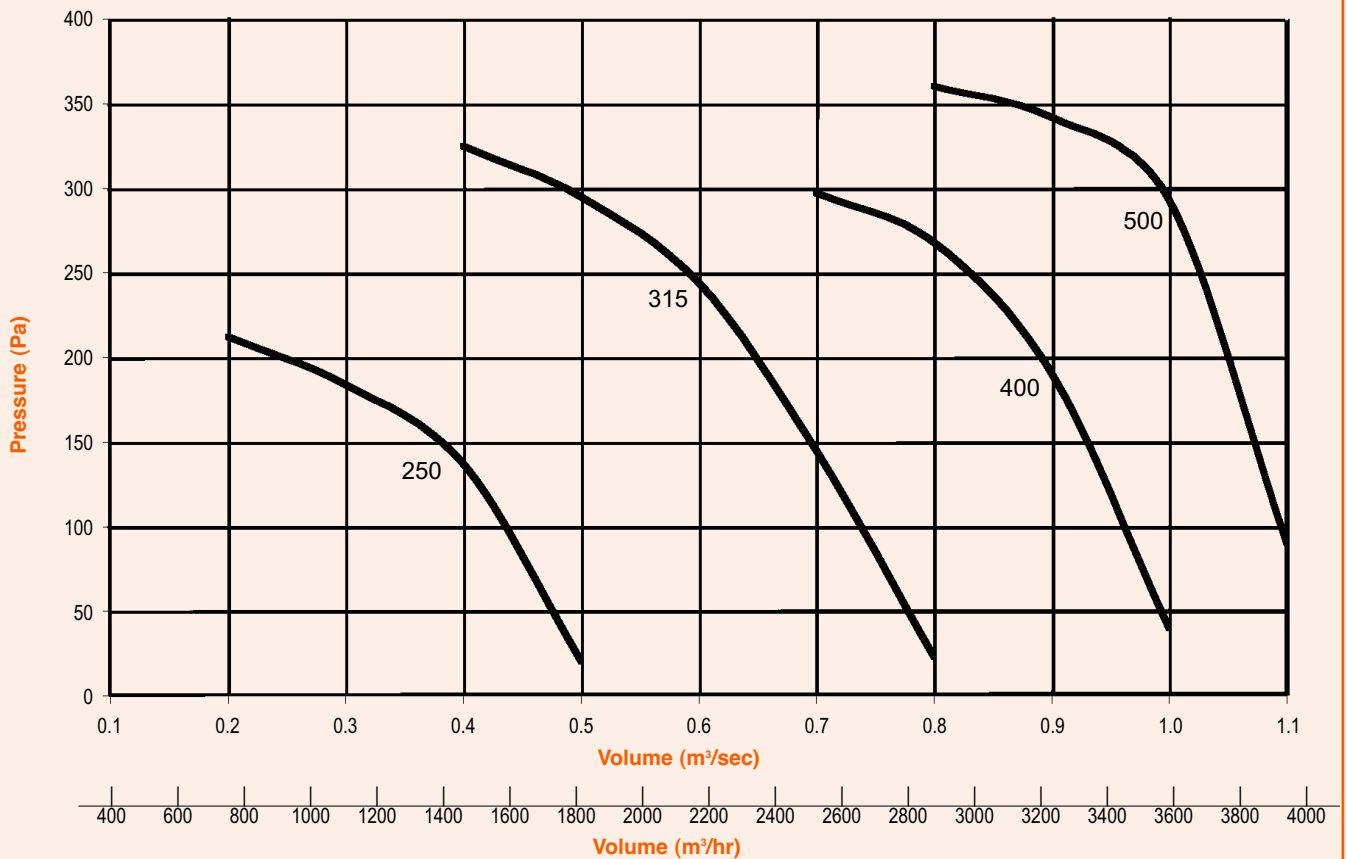
“RMTS” ROOF MOUNTED TWIN FANS - PERFORMANCE CURVES

Models 125 - 200



“RMTS” ROOF MOUNTED TWIN FANS - PERFORMANCE CURVES

Models 250 - 500



AUTOCHANGEOVER CONTROLLERS FOR 'DMTSQ' and 'RMTS' FANS

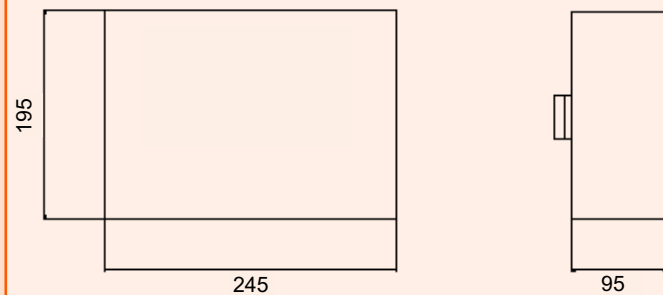
VAC1E

- In the event of a failure the standby fan starts automatically
- Suitable for fans up to 9 amps
- Fan fail indicator
- Fitted with volt free contacts for link to BMS system



VAC2E

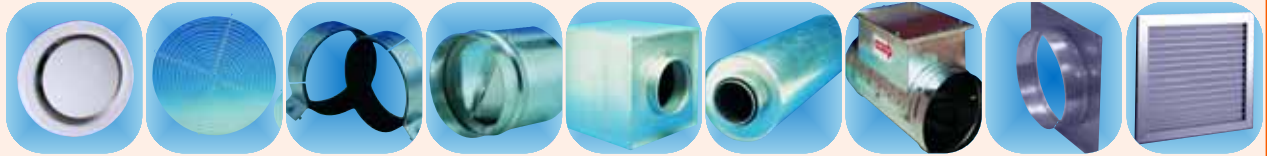
- Automatically alternates operation of duty and standby fans in order to avoid one fan working continuously.
- Suitable for fans up to 9 amps
- Fan fail indicator
- Fitted with volt free contacts for link to BMS system



CENTRIFUGAL TWIN FANS - GENERAL INFORMATION

- **Designed for use where continuous extract or supply of air is vital**
- **In-line with circular or rectangular ducting, or roof mounted**
- **Fitted with duty and stand-by fan and motor assemblies**
- **Use with autochangeover controller for switching automatically to standby motor should primary unit fail**
- **Indicator lights to show run or failure of motor**
- **Complete with backdraught shutter to prevent recirculation of air through the standby fan**
- **Fitted with removable access panel for servicing**
- **Belt driven options available for larger airflow**

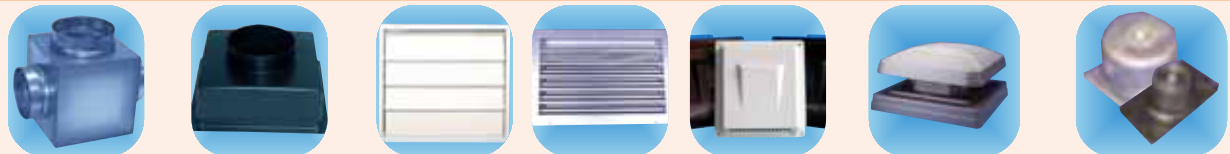
ACCESSORIES



Size		Air Valve (1)	Protection Guard	Duct Clamp	Backdraught Shutter	Filter Cassette	Silencer	Duct Heater	Spigot Plate	Door Transfer Grille
in	cm									
4	10	VAV4	CILG100	CILDC100	GS100	AFC100	SIL100	DH100-0.8kw	SPL100	-
5	12	VAV5	CILG125	CILDC125	GS125	AFC125	SIL125	DH125-1.2kw	SPL120	-
6	15	VAV6	CILG150	CILDC150	GS150	AFC150	SIL150	DH150-1.2kw	SPL150	NVGD6
8	20	VAV8	CILG200	CILDC200	GS200	AFC200	SIL200	DH200-2.5kw	SPL200	NVDG8
10	25	-	CILG250	CILDC250	GS250	AFC250	SIL250	DH250-3.0kw	SPL250	NVDG10
12	31	-	CILG315	CILDC315	GS315	AFC315	SIL315	DH315-4.5kw	SPL300	NVGD12
14	35	-	CILG355	CILDC355	GS355	AFC350	SIL350	DH350-6.0kw	SPL350	NVGD14
16	40	-	-	-	-	AFC400	SIL400	DH400-11kw	SPL400	NVGD16
18	10	-	-	-	-	AFC450	SIL450	DH450-12kw	SPL450	NVGD18
20	20	-	-	-	-	AFC500	SIL500	DH500-15kw	SPL500	NVGD20



Size		Flexible Ducting(2)	Worm Drive Clips	Duct Joining Piece	T Section	Y Piece	Flexible Duct Connector(3)	Egg Crate Grille		Single Deflection Grille	
in	cm							Standard	Damper	Standard	Damper
4	10	VFD4/6	WDC4	DJP4	TP4	YP4	-	-	-	-	-
5	12	VFD5/6	WDC5	DJP5	TP5	YP5	FLC125	-	-	-	-
6	15	VFD6/6	WDC6	DJP6	TP6	YP6	FLC150	ECG6	ECGD6	SD6	SDD6
8	20	VFD8/6	WDC8	DJP8	TP8	YP8	FLC200	ECG8	ECGD8	SD8	SDD8
10	25	VFD10/6	WDC10	DJP10	TP10	-	FLC250	ECG10	ECGD10	SD10	SDD10
12	31	VFD315/6	WDC12/16	DJP12	TP12	-	FLC310	ECG12	ECGD12	SD12	SDD12
14	35	VFD14/6	WDC12/16	DJP14	-	-	FLC350	ECG14	ECGD14	SD14	SDD14
16	40	VFD16/6	WDC12/16	DJP16	-	-	FLC400	ECG16	ECGD16	SD16	SDD16
18	45	VFD18/6	WDC18/22	DJP18	-	-	FLC450	ECG18	ECGD18	SD18	SDD18
20	50	VFD20/6	WDC18/22	DJP20	-	-	FLC500	ECG20	ECGD20	SD20	SDD20



Size		Multi Spigot Box(4)	Grille Box(5)		Gravity Shutter(6)	External Louvre(7)	Wall Cowl	Roof Terminal		Anti Vibration Mounts	
in	cm		Top	Side				Standard	Shutters	Standard	Spring
4	10	MSB4/-	-	-	GG4	FG4	VWC	-	-	AVM1	AVMS
5	12	MSB5/-	-	-	GG5	FG5	VWC	-	-	AVM1	AVMS
6	15	MSB6/-	GB6/4	GBS6/4	GG6	FG6	VWC	-	-	AVM1	AVMS
8	20	MSB8/-	GB8/6	GBS8/6	GG20	FGS8	-	RT200	RTS200	AVM1	AVMS
10	25	MSB10/-	GB10/6	GBS10/6	GG25	FGS10	-	RT200	RTS200	AVM1	AVMS
12	31	MSB12/-	GB12/8	GBS12/8	GG31	FGS12	-	RT300	RTS300	AVM1	AVMS
14	35	MSB14/-	GB14/10	GBS14/10	GG35	FGS14	-	RT350	RTS350	AVM1	AVMS
16	40	MSB16/-	GB16/12	GBS16/12	GG40	FGS16	-	RT400	RTS400	AVM1	AVMS
18	45	MSB18/-	GB18/-	GBS18/-	GG45	FGS18	-	RT400	RTS400	AVM1	AVMS
20	50	MSB20/-	GB20/-	GBS20/-	GG50	FGS20	-	RT500	RTS500	AVM1	AVMS

- (1) VAV4 and VAV5 also available in chrome, steel and with integral fire damper. VAV6 also available in chrome and steel.
 (2) Vectaire Flexible Ducting available in different lengths. Insulated aluminium and acoustic aluminium flexible ducting also available.
 (3) For use with circular, rigid ducting
 (4) Code represents size of main and side branches, e.g MSB12/10 is 12" main and 10" side branches.
 (5) First number represents Grille Box size, second number duct diameter (both sizes in inches) - other size/diameter combinations available
 (6) 10, 12 and 15cm Gravity Shutters plastic - other sizes with metal frame and plastic louvres.
 (7) 10, 12 and 15cm External Louvres plastic - all other sizes aluminium with birdscreen
 N.B - all grilles and grille boxes available in larger sizes.

Vectaire Ltd
 Lincoln Road
 Cressex Business Park
 High Wycombe
 Buckinghamshire
 HP12 3RH
 Tel: +44 (0)1494 522333
 Fax: +44 (0)1494 522337
 Email: sales@vectaire.co.uk
 www.vectaire.co.uk

