



"ACFS" - super silent cabinet fans



- **Acoustic cabinet fans**
- **High pressure centrifugal fans**
- **10 models**
- **9 sizes - 125 to 500mm dia**
- **Airflow from 0.1 to 2.3m³/sec (370 to 8244m³/hr)**

GENERAL

- 10 models from 125 to 500mm
- airflow from 370 to 8244m³/hr (218 to 4864 cfm)
- speed controllable
- thermal overload protection
- integral mounting points for easy installation. Separate mounting feet on models 355, 450 and 500
- extremely low noise levels
- max air temperature 40°C
- all models single phase except ACFS500T - 3 phase
- twin version also available

SPECIFICATION

- galvanised steel cabinet
- lined with 25mm thick, sound absorbing material - high density, non-toxic and Class "O" flame retardant
- thermal overload protection
- maximum air temperature 40°C

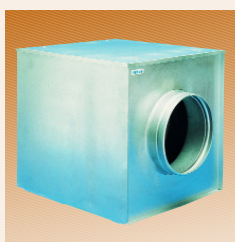
COMPLY WITH

- EN60335-2-80
- EC Low Voltage Directive 73/23-93/68
- EC Directive EMC89/336
- CE marked

RANGE

- **ACFS125** - 12cm/5", single phase
- **ACFS150** - 15cm/6", single phase
- **ACFS200** - 25cm/8", single phase
- **ACFS250** - 25cm/10", single phase
- **ACFS315** - 31cm/12", single phase
- **ACFS355** - 35cm/14", single phase
- **ACFS400** - 40cm/16", single phase
- * **ACFS450** - 45cm/18", single phase
- * **ACFS500M** - 50cm/20", single phase
- * **ACFS500T** - 50cm/20", three phase

ACCESSORIES



Air Filter Cassette



Duct Heaters

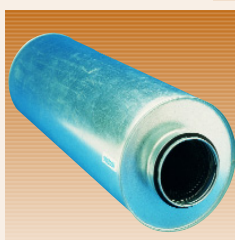
Speed Controllers



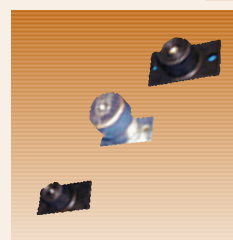
Flexible Duct Connectors



Silencers



Anti Vibration Mounts



Tel: +44(0)1494 522333
Fax: +44(0)1494 522337

Vectaire Ltd
Lincoln Road, Cressex Business Park
High Wycombe, Buckinghamshire, HP12 3RH

Email: sales@vectaire.co.uk
Web: www.vectaire.co.uk

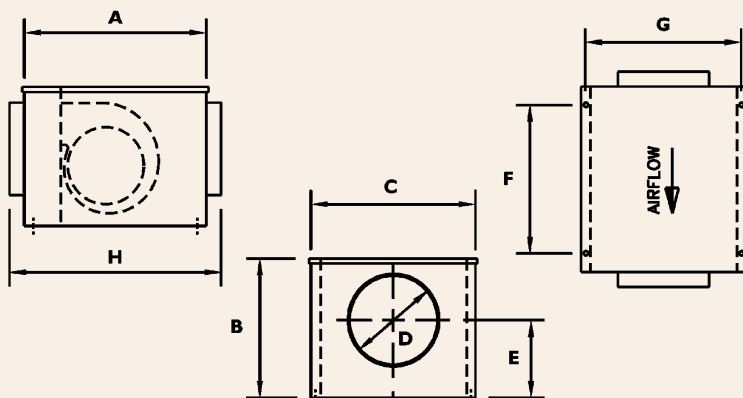
“ACFS” ACOUSTIC CABINET FANS - TECHNICAL DATA

Model	Size		Power Kw	FLC amps	SC amps	Speed rpm	Speed Controller		Sound Level db A at 3m	Sound Power Levels db							
	ins	cm					Mid Octave Bands (Hz)										
							63	125		250	500	1000	2000	4000	8000		
ACFS125	5	12	0.135	0.63	1.6	2000	VC1	VC1AM	31	48	54	50	48	44	44	41	40
ACFS150	6	15	0.135	0.63	1.6	2000	VC1	VC1AM	31	48	54	50	48	44	44	41	33
ACFS200	8	20	0.19	0.85	2.2	1250	VC1	VC1AM	36	55	63	57	52	48	47	44	42
ACFS250	10	25	0.37	3.6	11.2	1450	VC4M	VC4AM	41	60	66	60	57	53	49	48	43
ACFS315	12	31	0.37	3.85	12	1400	VC4M	VC4AM	48	66	68	61	59	59	57	51	49
ACFS355	14	35	0.37	4.5	6.5	1350	VC7M	VC7AM	52	65	70	64	61	60	59	57	55
ACFS400	16	40	0.55	6	18	1400	VC7M	VC7AM	52	68	72	68	64	64	62	60	59
ACFS450	18	45	0.55	6.7	10.0	1250	VC7M	VC7AM	55	68	72	67	64	63	61	59	55
ACFS500M	20	50	0.59	7	11.0	880	VC7M	VC7AM	55	70	73	70	64	60	57	56	53
ACFS500T	20	50	1.1	4.7	9.0	900	-	VC4AT	61	74	78	77	70	65	60	57	54

“ACFS” ACOUSTIC CABINET FANS - PERFORMANCE

Model	Max m ³ /hr	Max cfm	m ³ /sec at Pa											
			0	25	50	75	100	150	200	250	300	350	400	
ACFS125	370	218	0.103	0.102	0.01	0.095	0.09	0.085	0.078	0.066	0.04			
ACFS150	396	234	0.11	0.108	0.104	0.102	0.1	0.09	0.083	0.07	0.043			
ACFS200	648	382			0.18	0.175	0.17	0.163	0.152	0.125	0.085			
ACFS250	1800	1062			0.55	0.48	0.46	0.4	0.28					
ACFS315	2664	1572			0.78	0.76	0.74	0.7	0.65	0.61	0.54			
ACFS355	2772	1635					0.83	0.79	0.78	0.75	0.72	0.65		
ACFS400	3600	2124					0.98	0.94	0.89	0.83	0.72			
ACFS450	4032	2379					1.16	1.13	1.1	1.06	1.01	0.97	0.92	
ACFS500M	5328	3144					1.5	1.45	1.39	1.32	1.2			
ACFS500T	8244	4864					2.23	2.11	1.96	1.77	1.52			

“ACFS” ACOUSTIC CABINET FANS - DIMENSIONS (mm)



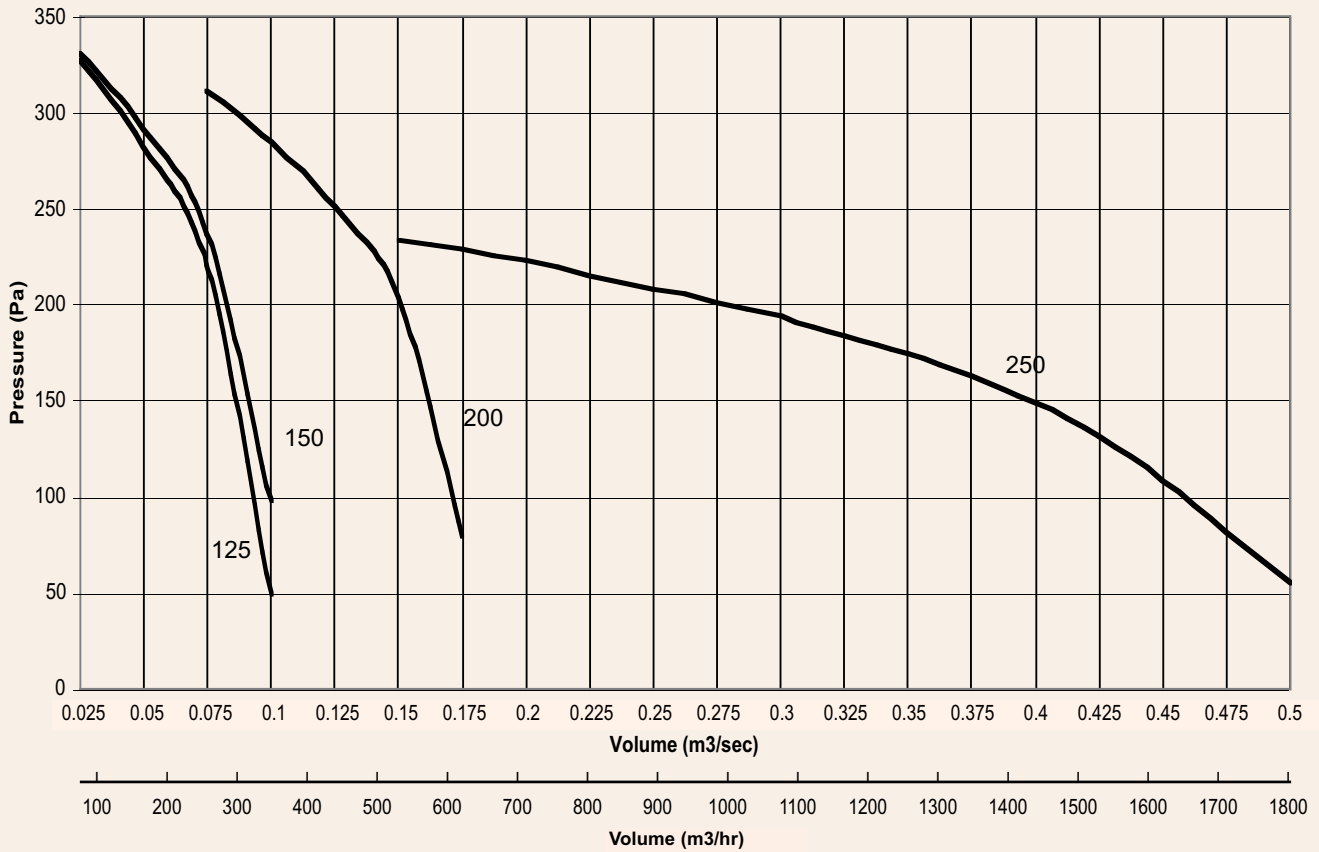
* separate fixing brackets supplied

Model	A	B	C	D	E	F	G	H	Kg
ACFS125	400	240	375	125	127	300	355	490	13
ACFS150	400	240	375	150	127	300	355	495	13
ACFS200	425	310	475	200	190	325	455	515	15
ACFS250	450	375	475	250	230	350	455	550	29
ACFS315	550	500	575	315	295	450	555	670	40
ACFS355	500	500	500	350	280	*	*	600	35
ACFS400	550	500	625	400	260	450	605	670	41
ACFS450	600	600	600	450	330	*	*	700	38
ACFS500M	750	750	750	500	385	*	*	850	66
ACFS500T	750	750	750	500	385	*	*	850	66



"ACFS" ACOUSTIC CABINET FANS - PERFORMANCE CURVES

Models 125 - 250



Models 315 - 500

